

12.1 APPENDIX XII. TRANSFORMER CONNECTION SYMMETRICAL COMPONENT NETWORKS

12.1 Transformer Configuration Impedance Network Diagrams

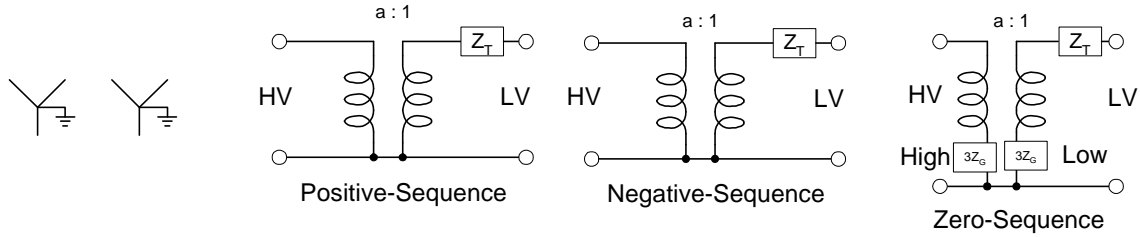


Figure XII. 1 Wye-Grounded-Wye-Grounded Transformer Sequence Impedance Networks

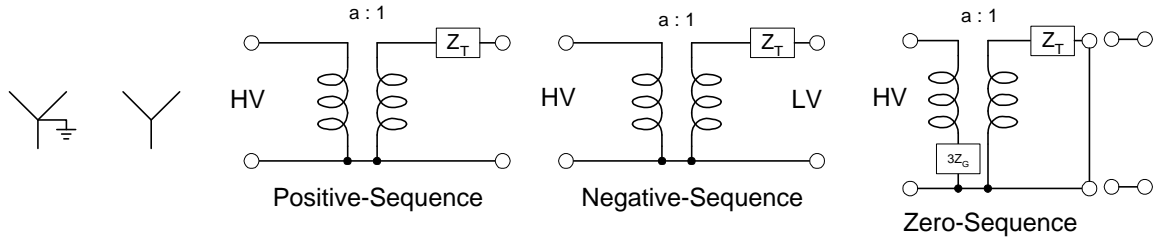


Figure XII. 2: Wye Grounded-Wye Transformer Sequence Impedance Networks

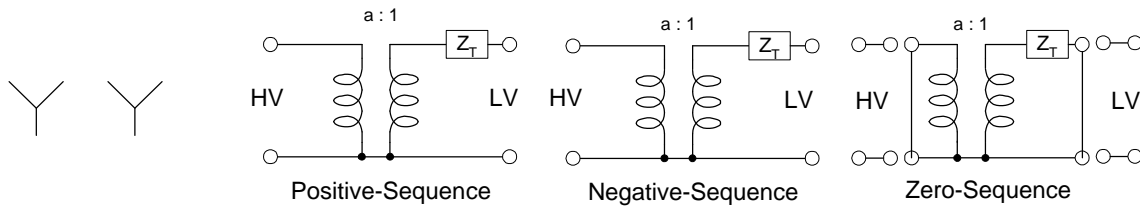


Figure XII. 3: Wye-Wye Transformer Sequence Impedance Networks

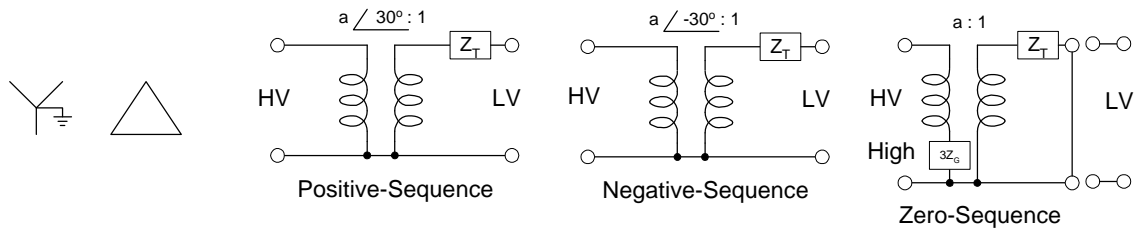


Figure XII. 4: Wye-Grounded-Delta Transformer Sequence Impedance Networks

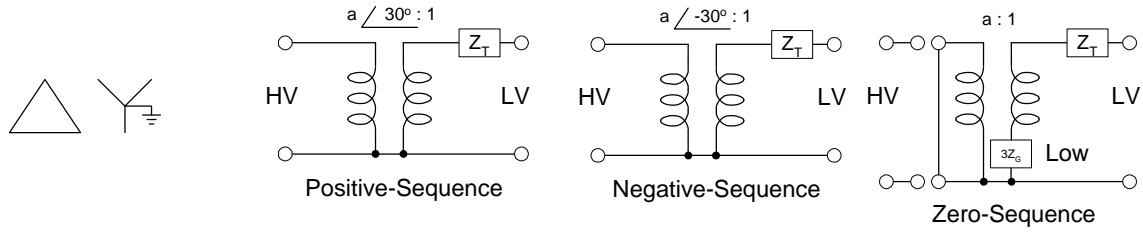


Figure XII. 5: Delta–Wye-Grounded Transformer Sequence Impedance Networks

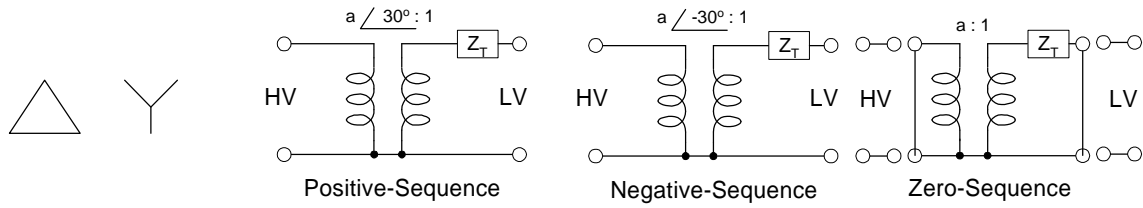


Figure XII. 6: Delta–Wye Transformer Sequence Impedance Networks

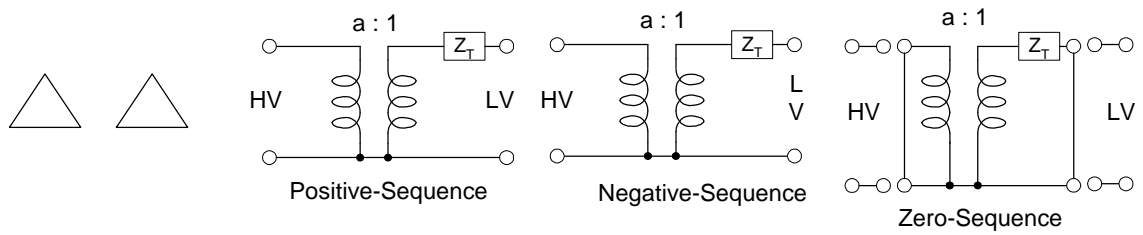


Figure XII. 7: Delta-Delta Transformer Sequence Impedance Networks

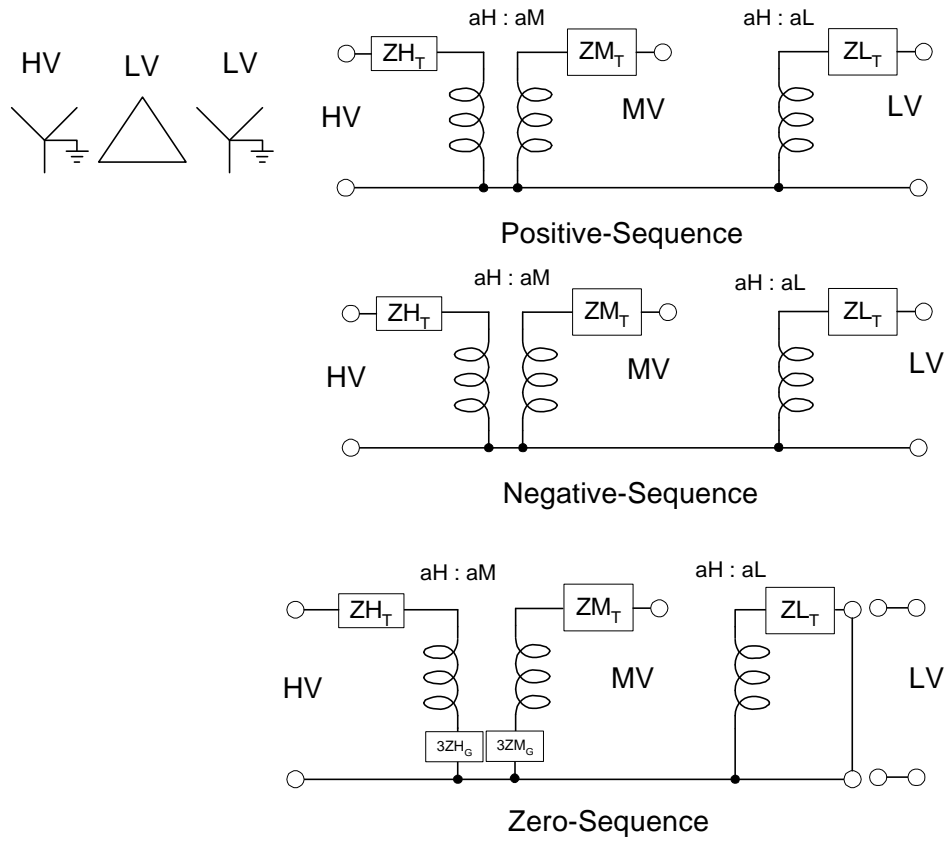


Figure XII. 8: Wye-Grounded-Wye-Grounded-Delta Tertiary Transformer Sequence Impedance Networks

12.2 Two-Source Faulted Networks Symmetrical Component Impedance Network Diagrams

12.2.1 Single-Line-to-Ground Faults

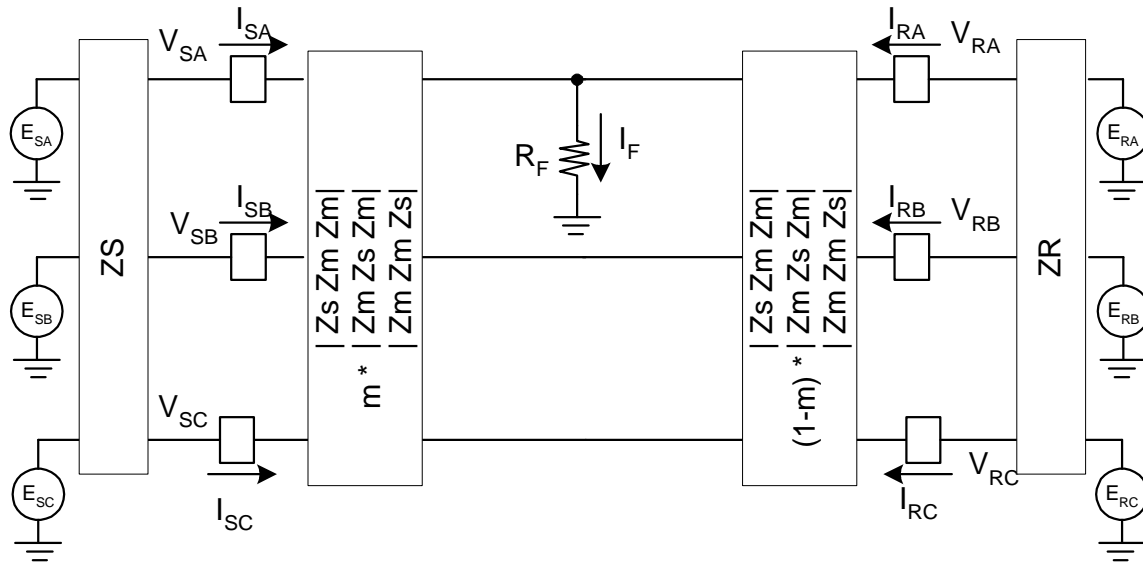


Figure XII. 9: Single-Line-to-Ground Fault Three-Line Diagram

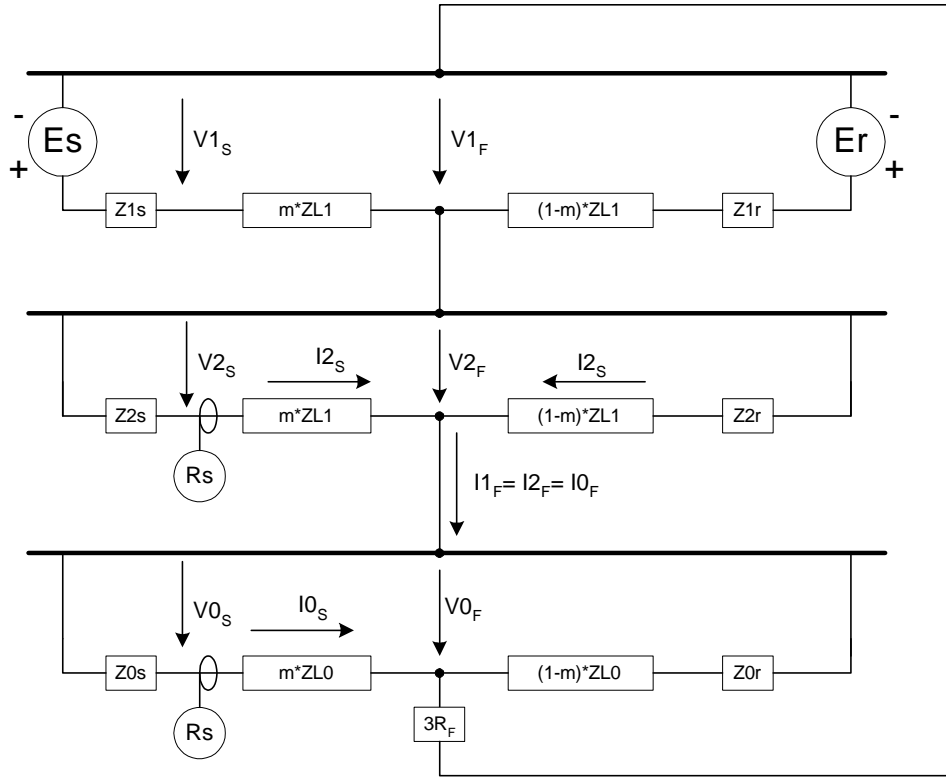


Figure XII. 10: Single-Line-to-Ground Fault Symmetrical Component Diagram

12.2.2 Line-to-Line Faults

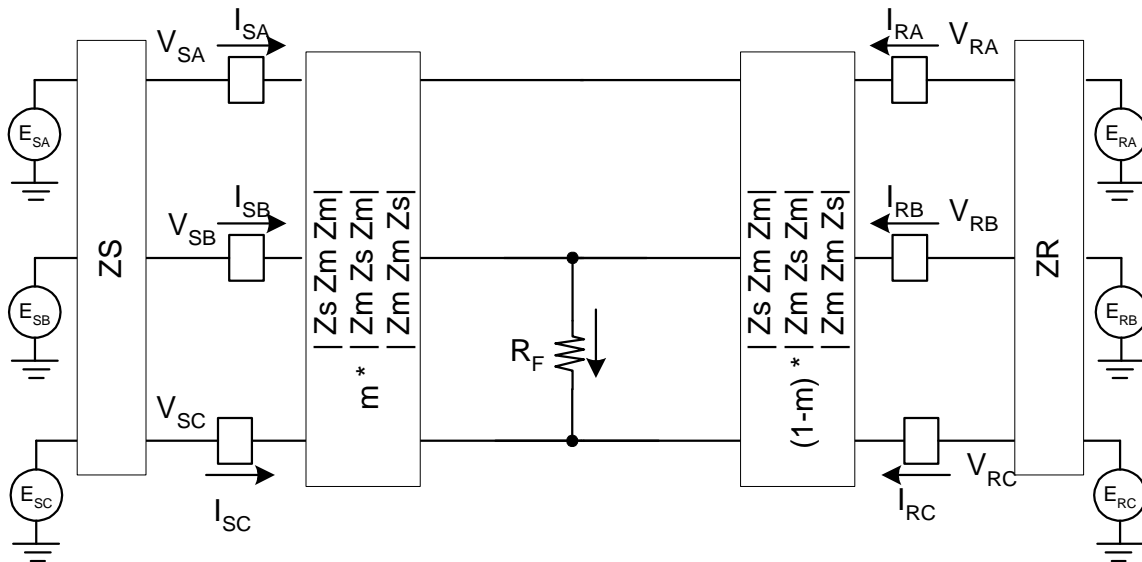


Figure XII. 11: Line-to-Line Fault Three-Line Diagram

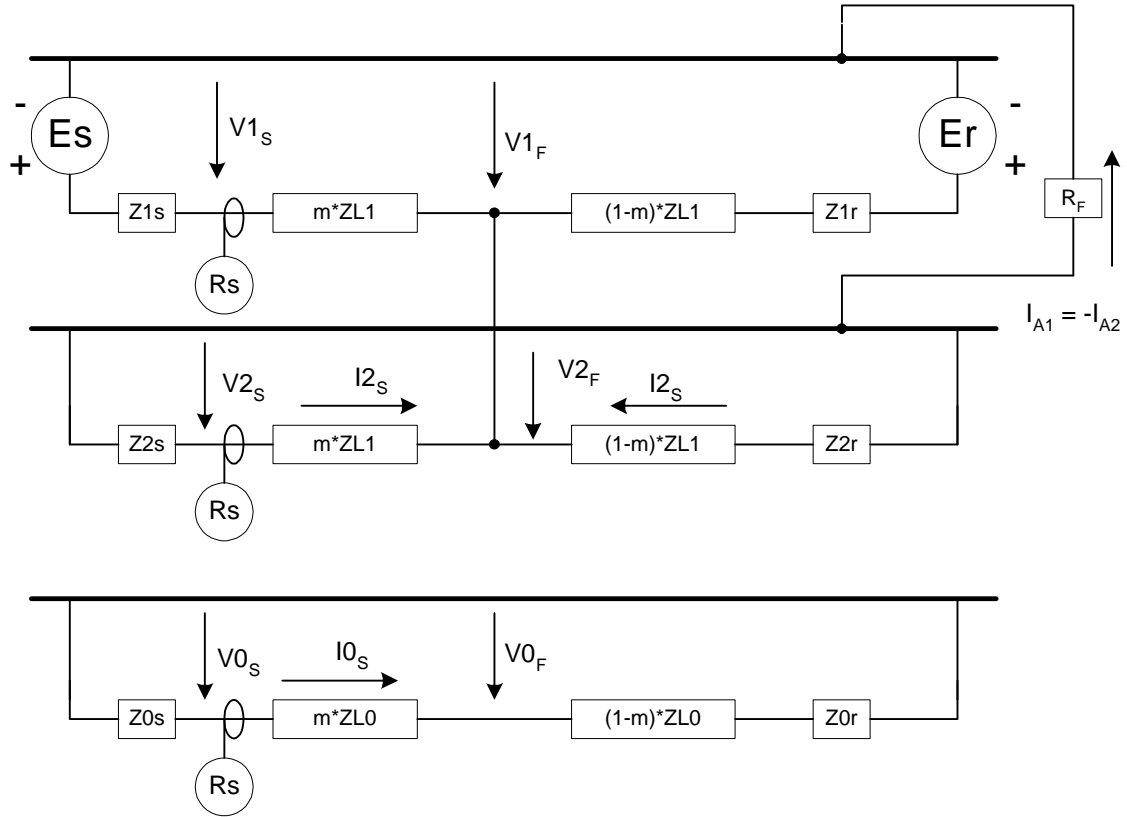


Figure XII. 12: Line-to-Line Fault Symmetrical Component Diagram

12.2.3 Line-to-Line-to-Ground Faults

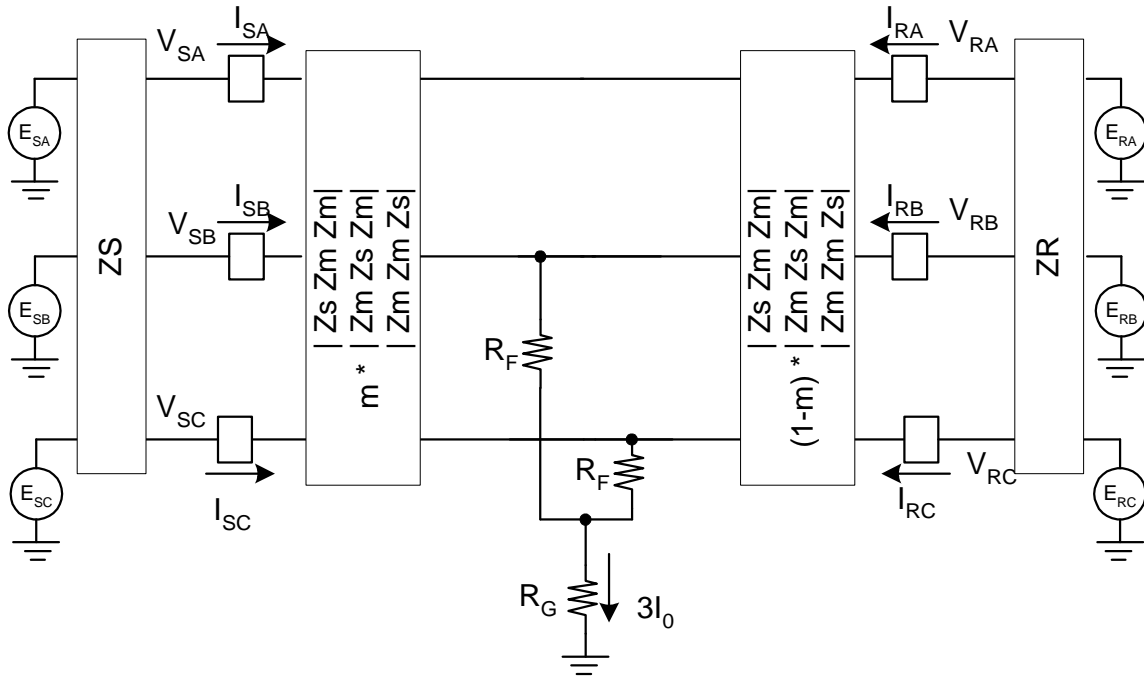


Figure XII. 13: Line-to-Line-to-Ground Fault Three-Line Diagram

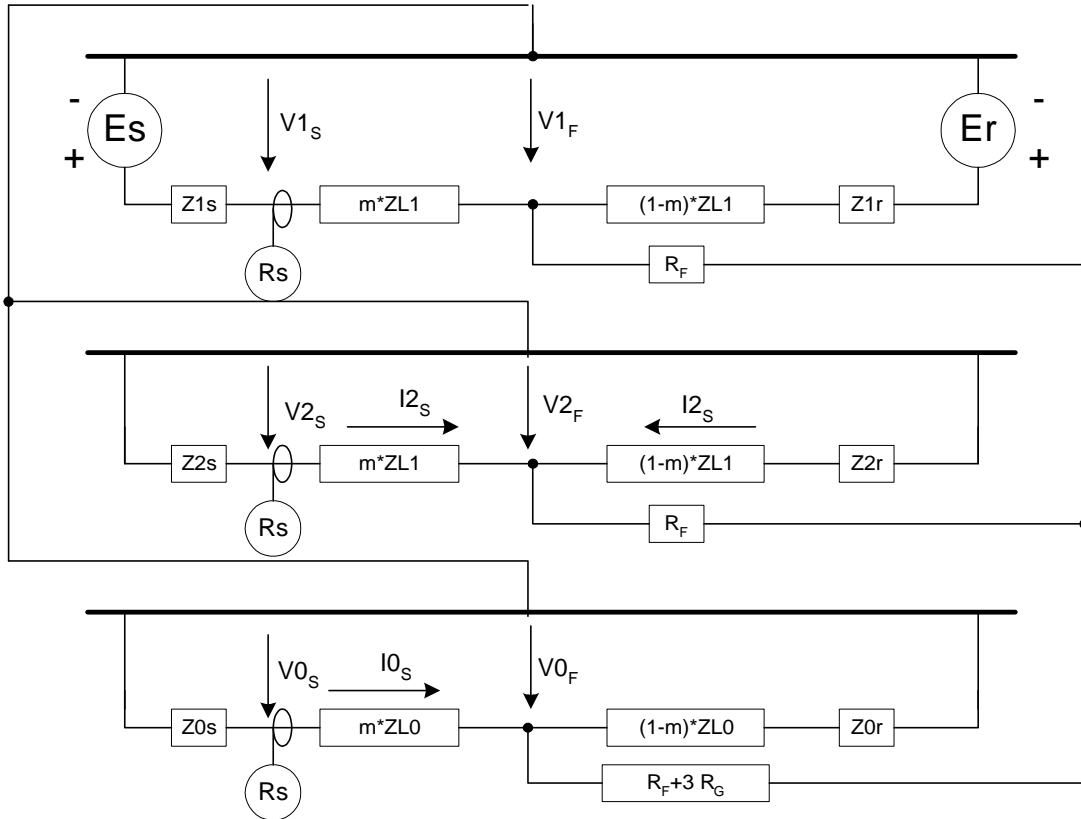


Figure XII. 14: Line-to-Line-to-Ground Fault Symmetrical Component Diagram

12.2.4 Three-Line-to-Ground Faults

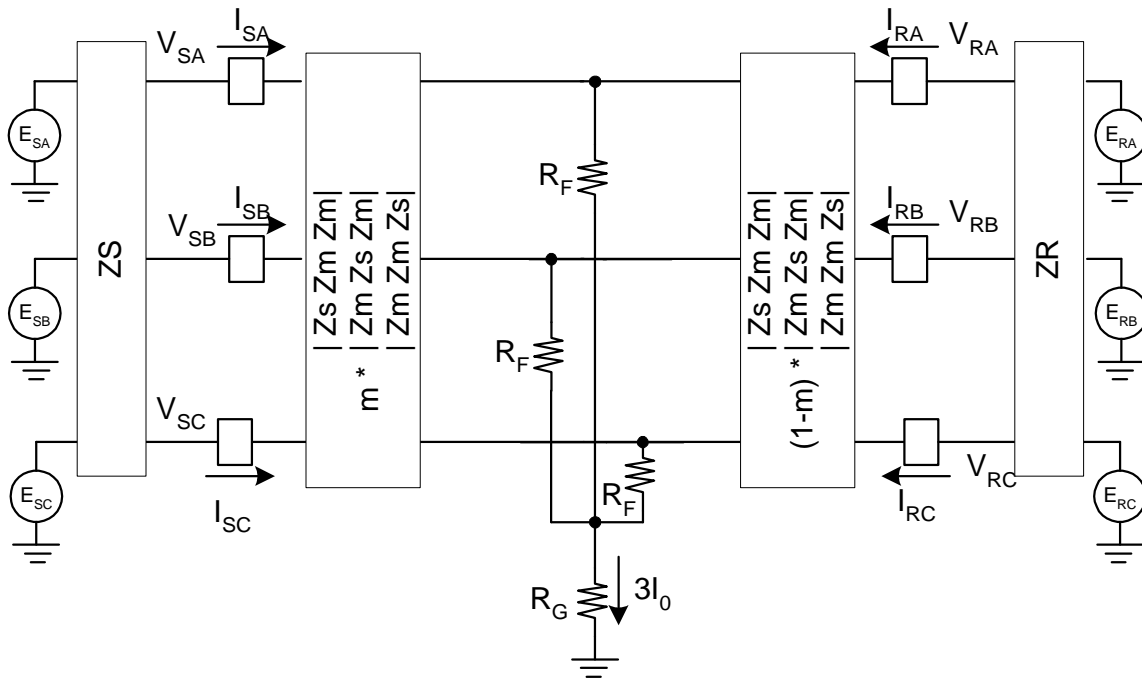


Figure XII. 15: Three-Line-to-Ground Fault Three-Line Diagram

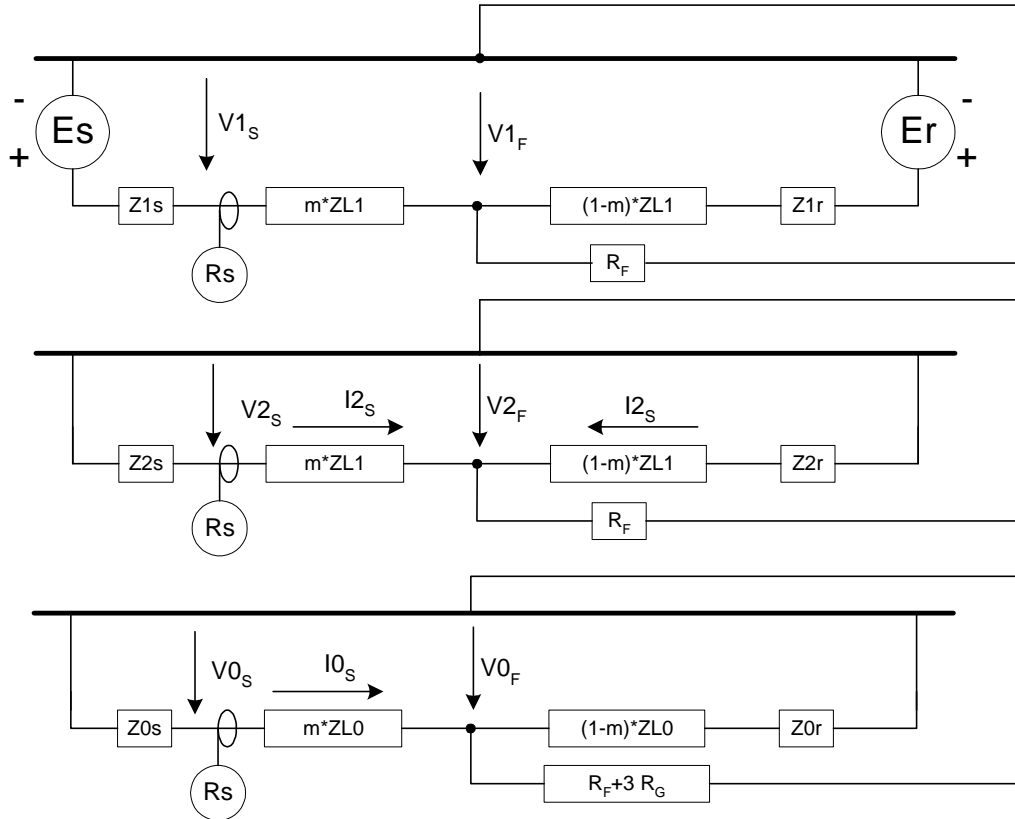


Figure XII. 16: Three-Line-to-Ground Fault Symmetrical Component Diagram

12.2.5 Single-Line Open

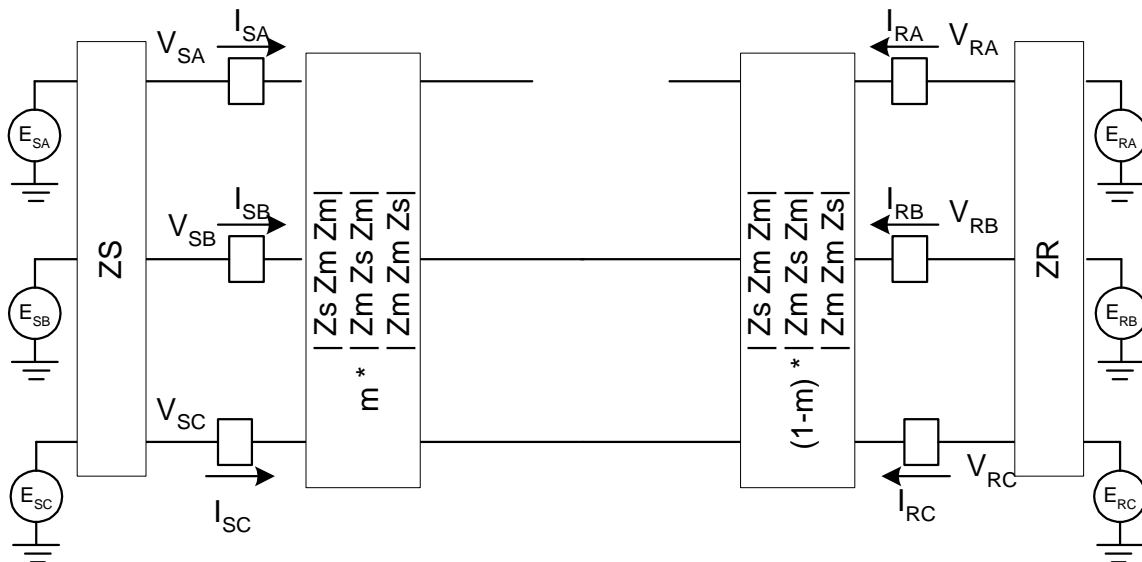


Figure XII. 17: Single-Line Open Three-Line Diagram

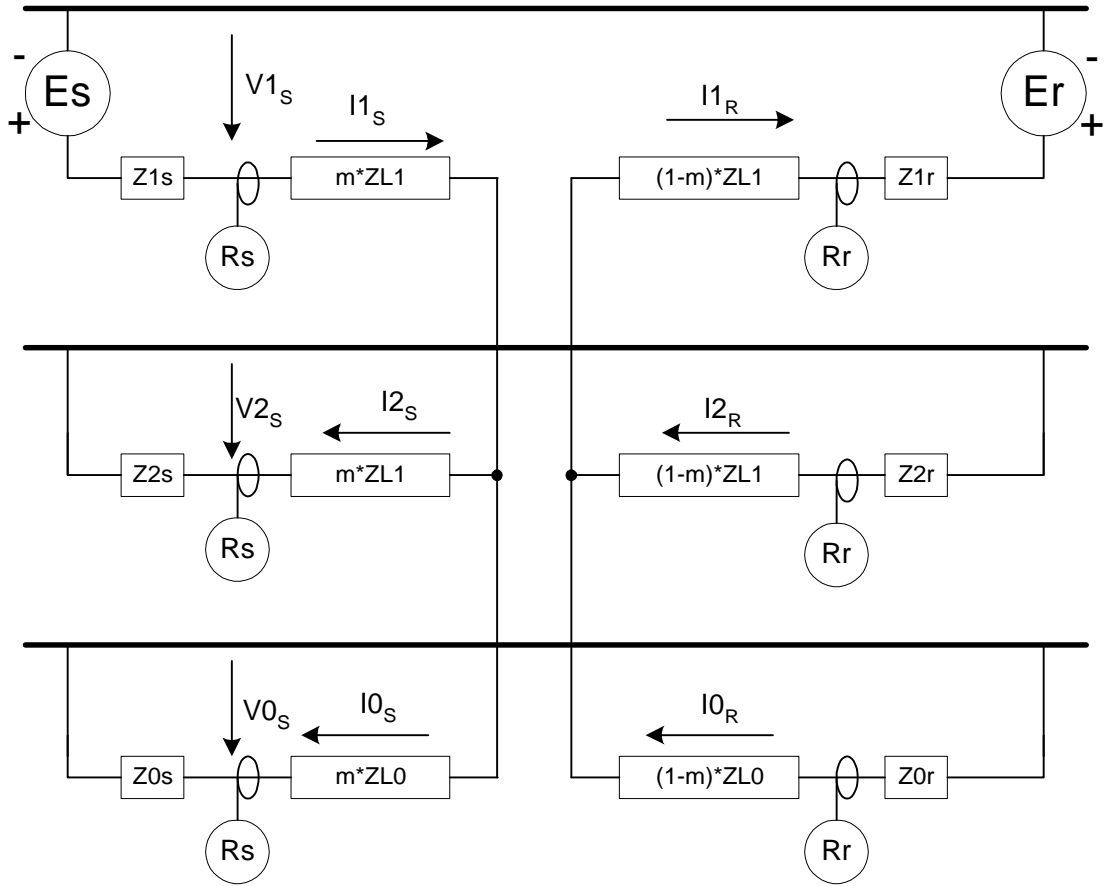


Figure XII. 18: Single-Line Open Symmetrical Component Diagram